

# A WELLNESS-INSPIRED RESTYLE

## THDP

Terme di Saturnia  
Natural Destination Resort  
Manciano, Grosseto, Italy



Renovation of the interior at the Terme di Saturnia Natural Destination resort combines classical style and contemporary design, triggering an interplay of references to the surrounding natural environment.

Chromatically, the design continually references the ancient baths and the Maremma's natural environment, tightly interweaving indoor and outdoor spaces.

Light playing on the rippling surface of water, infinite shades of blue, rocks carved by water currents, underground pathways and waterfalls... the natural environment at the Terme di Saturnia baths immediately connotes an atmosphere of wellness and relaxation.

The designers at THDP of London took this as inspiration for their renovation of the Terme di Saturnia Natural Destination resort, its bedrooms and the hotel's common areas. Originally dating back to 1919, the five-star complex is located in the heart of the Tuscan Maremma, in the midst of sulfur springs and a verdant backdrop. Drawing on the location's continuity with the natural environment - a century after it first opened its doors - the hotel's interiors were renovated to a design conceived to offer guests the utmost comfort.

The hotel is accessed via a large entrance hall. Two communicating rooms, the lobby and reception, feature a fireplace that imbues the space with a feeling of warmth and familiarity. The redesign

retained the original stained-glass window framing an olive tree that grows in the center of a patio, which is divided up into a series of small outdoor lounge areas. A new, multifunctional pop-up bar has been designed to host a variety of social and food&wine events. To offer hotel guests the most comfortable experience possible, the transitional space between the lobby and the restaurant is now a dedicated breakfast buffet room, complete with a large, central buffet table. Just off the patio, the "white room" was designed as extra breakfast space, and is also available for private dinners and evening events. The hotel's common areas include a veranda (arranged differently in summer and winter) traversed by a water feature, and an underground relaxation area with gym near the corridor that leads to the thermal baths. Chromatically, the design continually references the ancient baths and the Maremma's natural environment in a tight interweave of indoor and outdoor spaces, using a color palette that ranges from the ethereal tones of the

Mulino waterfalls in the reception area, with oxidized tables and bronzed handles reproducing the natural corrosion of sulfurous waters, to the patio's green and ochre colors redolent of the Tuscan countryside, and the bright turquoise and petrol blue tones of glazed terracotta tiles on the bar counter.

The furnishings and finishes in the hotel's common areas and 124 bedrooms combine the classical with the contemporary: original pieces of furniture are flanked by modern design artefacts and locally-made artisanal pieces. The style chosen for the bedrooms is both classic and innovative, combining the warmth of oiled walnut parquet flooring with fresh blue and sky-blue fabrics. The bedroom furniture was inspired by the tradition of Tuscan leather goods with metal detailing. In the renovation, some bathrooms had their travertine cladding restored, while others were completely reclad in ceramic slabs.





Guests arrive at the lobby and reception area to be greeted by an atmosphere of warmth and familiarity heightened by a fireplace and surrounding lounge.



Inspired by the theme of water, the design's leitmotif and color palette range from the ethereal tones of the Mulino waterfall in the reception area to bright turquoise and petrol blue tiles on the bar counter.



In addition to the restaurant and bar, food & beverage spaces include a breakfast buffet room and the "white room", a multifunctional space available for use throughout the day.



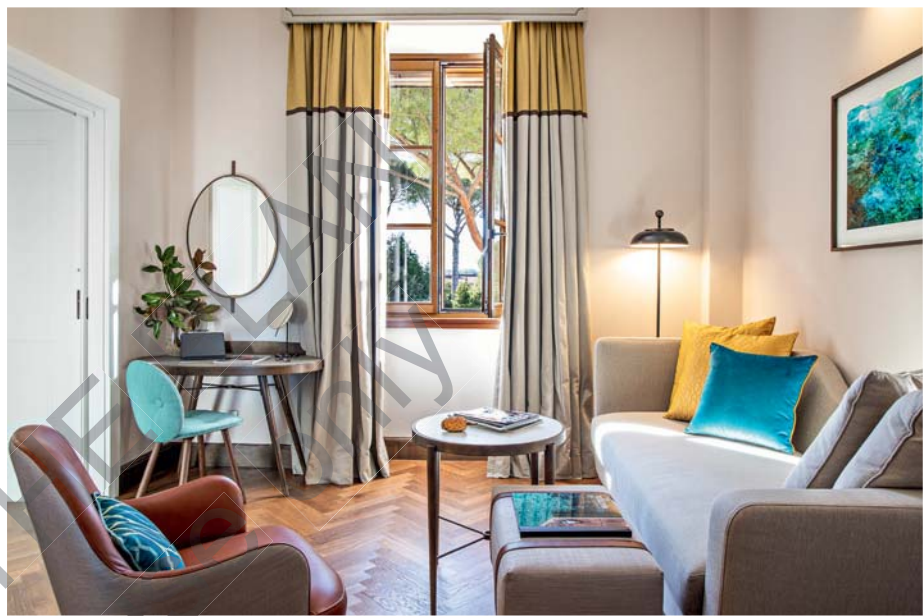




### Technology and Esthetics

The water-based enamels and washable water paints on this project were sourced from the Sikkens company's wide range of high-tech products designed for use in high-footfall environments. The historic coatings brand combines high standards of technical performance with a wide range of decorative effects, using innovative finishes and chromatic solutions to cater to the latest aesthetic trends in interior design and anticipate the needs of contemporary living.

[www.sikkens.it](http://www.sikkens.it)  
[www.sikkensdecor.it](http://www.sikkensdecor.it)



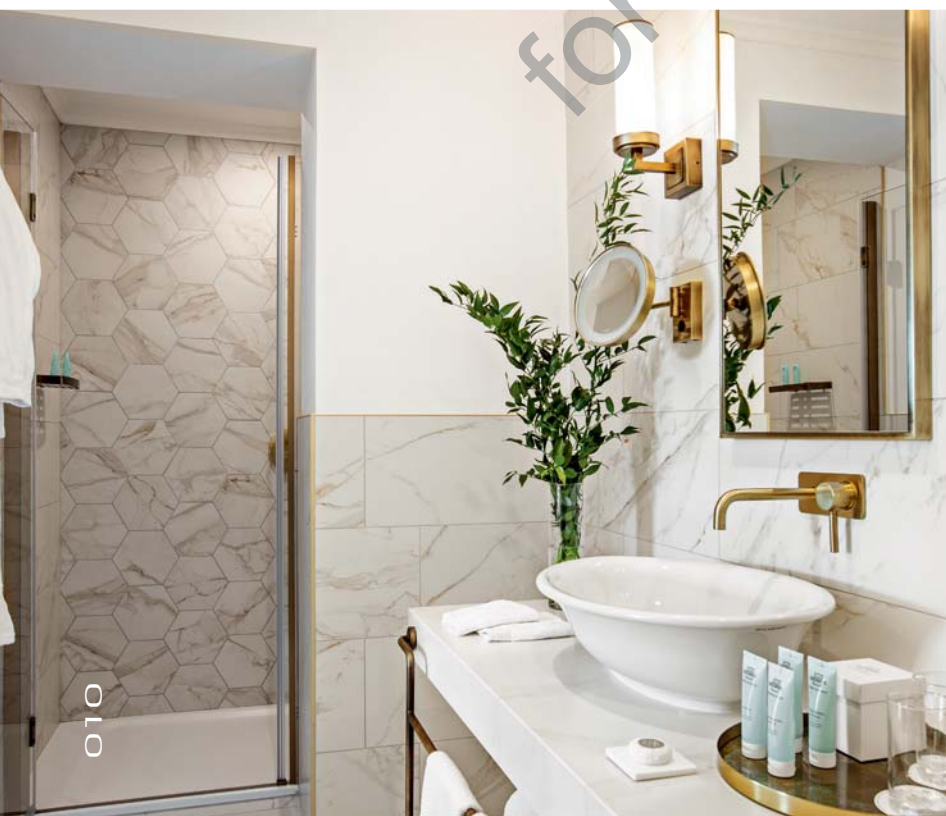
**Location:** Manciano, Grosseto, Italy - **Client:** Terme di Saturnia Natural Destination - **Completion:** 2020 - **Architect:** Lorenzo Bellini - **Interior Design:** THDP - **Main Contractor:** Staredil

### Consultants

**Plant and Equipment:** Lombardini 22 - **Landscape:** Paolo Pejrone

**Photography by** Giorgio Baroni, courtesy of Terme di Saturnia Natural Destination

The rooms were redecorated in a fresh and innovative style; carpeting was replaced with oiled walnut parquet, travertine wall tiles were restored and, where necessary, the bathrooms were completely renovated in ceramic slabs.



### Essential Design, Maximal Comfort

Two Kaldewei products were chosen for the new bathrooms at the Terme di Saturnia resort: its essential and elegant flush Superplan shower tray, and the softly-rounded Ellipso Duo Oval bathtub, with Vivo Aqua Eco whirlpool feature to ensure maximal comfort. Like all of the company's products, the shower tray and bathtub are made from special Kaldewei enameled steel, a sustainable, resistant, durable and easy-to-maintain material.

[www.kaldewei.it](http://www.kaldewei.it)

